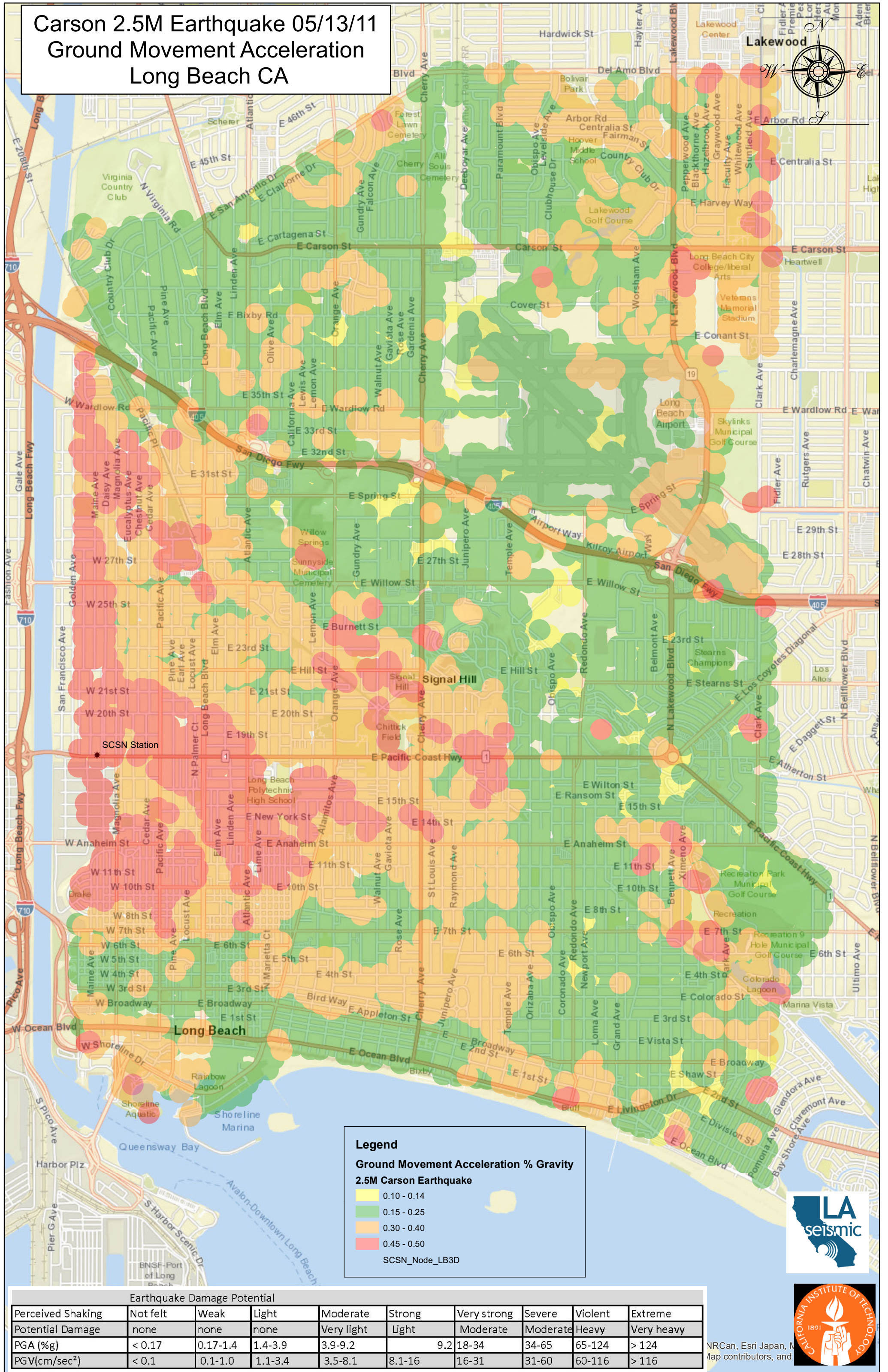


Carson 2.5M Earthquake 05/13/11
Ground Movement Acceleration
Long Beach CA



Legend

Ground Movement Acceleration % Gravity

2.5M Carson Earthquake

0.10 - 0.14

0.15 - 0.25

0.30 - 0.40

0.45 - 0.50

SCSN_Node_LB3D

Earthquake Damage Potential

Perceived Shaking	Not felt	Weak	Light	Moderate	Strong	Very strong	Severe	Violent	Extreme
Potential Damage	none	none	none	Very light	Light	Moderate	Moderate	Heavy	Very heavy
PGA (%g)	< 0.17	0.17-1.4	1.4-3.9	3.9-9.2	9.2	18-34	34-65	65-124	> 124
PGV(cm/sec ²)	< 0.1	0.1-1.0	1.1-3.4	3.5-8.1	8.1-16	16-31	31-60	60-116	> 116

NRCan, Esri Japan, Map contributors, and

